

Visiting Lauriston Castle



Original Artwork by, Erin

Visual Guide

A step-by-step written and visual guide to help you plan and enjoy your visit

This is Lauriston Castle



Our address

Lauriston Castle
2a Cramond Road South
Edinburgh
EH4 6AD



Lauriston Castle is a 3 star historic house.

Visits to the house have to be pre-booked and are by guided tour only. You can pre-book a tour via the website. We also offer an annual programme of seasonal events, more information which can also be found on our website;

<https://www.edinburghmuseums.org.uk/venue/lauriston-castle>

We are delighted to offer free entry to our tours for Ukrainian families and their Scottish host families. Please ring ahead on **0131 336 2060** to book.

Visiting the grounds and gardens is free of charge, gates open: April – Oct 8:00 am – 7.30 pm,
Nov – March 8:00 am- 4.30 pm

Packing Your Bag For Your Visit



There are baby-changing facilities located within the accessible toilet.

We do not have luggage storage or a cloakroom.

You are welcome to bring small backpacks and bags on a guided tour but please ensure you don't bump into any artwork as many items are fragile.

Large backpacks and bags should be left at the reception table for the duration of the tour.

Sensory Backpacks

We have launched our first sensory backpack for neurodivergent visitors, their families and carers at Lauriston Castle for you to borrow and use during your visit.

The pack contains: Ear Defenders, A range of Fidget Toys, a Notepad and a Drawing Pencil, Emotion Cards

Please ring Lauriston Castle on 0131 336 2060 in advance of your visit to reserve a backpack.



Mimi's Little Bakehouse is in the courtyard and is open Monday to Friday 9:00 am to 4:00 pm and Saturday & Sunday 10:00 am to 5:00 pm.

Please note that opening times vary seasonally.

Please visit the website:

<https://mimisbakehouse.com/locations/lauriston-castle> for more information.

Eating and Drinking

Mimi's Little Bakehouse

From the main entrance to the dining area, there is level access.

The door is 900mm wide.

To get to a table outside, there are no steps.

To enter the small internal seating area, there is one small step.

Background music is sometimes played but it can be turned off upon request.



Picnic Area - Castle Grounds

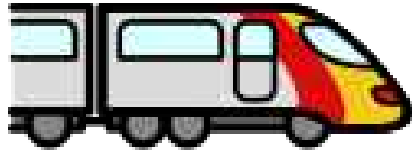
You can bring your own food to the picnic area.

The grounds are open daily for dog walkers and the general public.

Depending on the weather, please feel free to bring picnic blankets and sit on the grass.



Getting to Lauriston Castle

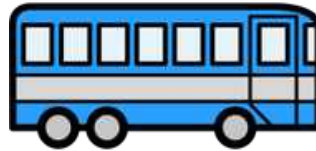


Public Transport - Train

The nearest train station is Edinburgh Haymarket. The train station is 3.4 miles / 5.5 km from Lauriston Castle.

Waverley Station in the city centre may be more convenient for picking up bus routes out in the direction of Lauriston Castle.

The 29 and 37 pass along Princes Street, near Waverley Station. A taxi ride takes about 25 minutes.



Public Transport - Bus

Barnton Park (for buses 47 and 47B) located just outside the entrance to Lauriston Castle.

Davidson's Mains (for bus 21) or Silverknowes Terminus (16, 27, 29 and 37), are both around 10 minutes walk from Lauriston Castle.

The bus stop is 0.2 miles / 0.3 km from Lauriston Castle.



Public Transport - Taxi

You can get a taxi with City Cabs by calling 0131 228 1211.

There is a drop-off point at the main entrance. The drop-off point has a dropped kerb.

The taxi company has wheelchair-accessible vehicles.

Getting to Lauriston Castle



By Car & Parking

There is parking near the venue. There are accessible parking spaces. Parking is free.

There is a drop-off point at the main entrance. The drop-off point has a dropped kerb.

From the car park to the entrance, there is level access. It is about a 5 minute walk between the parking and the castle.

There is accessible parking at the entrance of the castle.



Google Streetview image of Lauriston Castle grounds and parking



Google Maps image of Lauriston Castle grounds and parking

Accessing Lauriston Castle



Accessing the Castle

The castle door is 770mm wide.

The castle's main entrance has 4 steps.

The castle's main door is side-hung and manual.



When you approach the path, the accessible entrance is on the right of the café, through a courtyard.

The accessible entrance leads you to the old kitchen and staff offices.

Unfortunately, due to the historic nature of the castle, the visitor route is inaccessible to wheelchair users. Nevertheless, there is a digital presentation with photographs of the castle that the staff would be happy to show you. A digital tour experience must pre-booked by calling the castle on **0131 336 2060** or by emailing lauristoncastle@edinburgh.gov.uk.

Public Toilets



There is an accessible public toilet for disabled visitors.

From the main entrance to the public toilet, there is level access.

There is a permanent ramp.

There are also baby-changing facilities available and an emergency assistance button.



Important Rules While on a Guided Tour of the Castle



No Flash
Photography

Taking photographs inside the castle is OK as long as you do not use the flash.



No Eating or
Drinking

Please do not take food or drink into the castle itself.



Please Do Not
Touch

Please do not touch any of the artworks, furniture or paintings inside the castle.



No Running
Inside The Castle

Please do not run inside the castle.

Guided Tour of Lauriston Castle

Tours must be pre-booked and are guided by an expert member of the Museums & Galleries Edinburgh team.

Staff wear navy blue fleeces and are easily identifiable.

You will meet your guide at the main entrance to the castle.

You will find out about the history of Lauriston Castle, and the architecture as well as learn more about the families who have called it home over the years.



Guided Tour of Lauriston Castle



When you enter the castle with your guide, you will see a large staircase which leads to the upper floor and the main part of the tour.

There is a floor plan on display showing the castle's stages of development throughout its history.

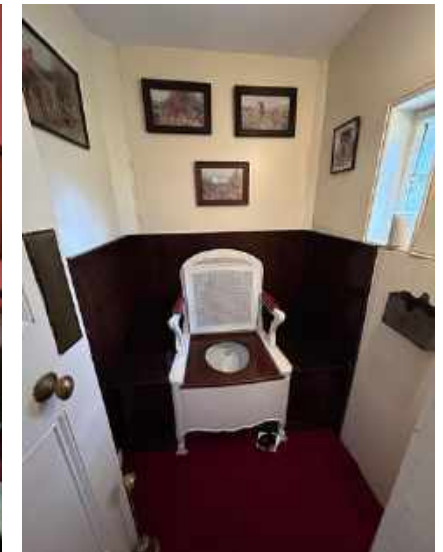
Guided Tour of Lauriston Castle

Once you reach the upper floor, your guide will give you information about the house, its residents and the fantastic artwork collections on display.

You will learn about each room as you progress with the tour, including the bedrooms, dining rooms, reception rooms where guests were entertained and even the bathroom!

You will see lots of artwork, furniture and ornaments collected from around the world.

Some parts of the venue have low lighting.



Guided Tour of Lauriston Castle

You will visit a library with a secret room.

You will walk along corridors that can narrow at points.

You will see colourful stained glass in the windows.

You will also see where the staff lived and worked in the downstairs area known as the “servants’ quarters.”

There is a spiral staircase down to the servants’ quarters, the stairs are wide but steep, and there is a handrail that goes halfway down the staircase to use if needed. A guide can direct you towards the main staircase if you are unsure about using this one.



Guided Tour of Lauriston Castle

Once your tour is complete, your guide will lead you to the exit.

You will exit through the same door that you entered at the beginning of the tour.

If you have any questions on any part of the tour, your expert guide will be happy to provide answers.

You can enjoy the castle grounds, visit the Edinburgh-Kyoto Friendship Garden or take a relaxing walk along one of the woodland trails.



Things to See and Do

Visit the Edinburgh-Kyoto Friendship Garden

Kyoto-Friendship Garden was created in 2002 to celebrate the twinning of Kyoto prefecture in Japan and Scotland's capital city and is the perfect place to relax.



Things to See and Do

Walk a Woodland Trail

Enjoy a woodland walk in the Castle grounds, create some art from nature or just relax in the outdoors.



Things to See and Do

Events

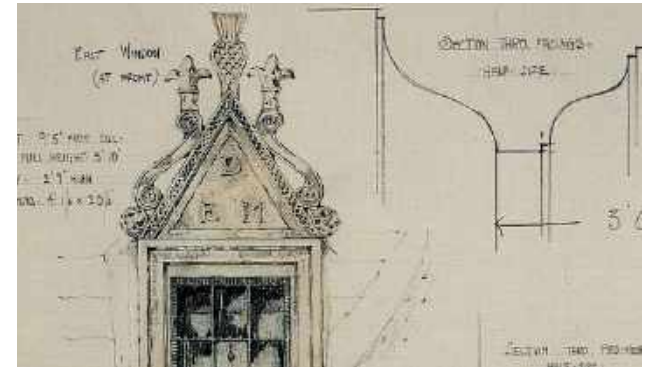
Lauriston Castle hosts a variety of exciting family events, lectures and workshops throughout the year - particularly in the spring and summer months.



Family Drop-In Events & Creative Workshops



Lauriston Lectures



Themed Tours

You need to pre-book some workshops and events.

Some workshops and events are free to attend, while others incur a small charge.

Visit the website <https://www.edinburghmuseums.org.uk/venue/lauriston-castle> to find out what is happening during your visit.

Customer Care and Support

If you are bringing a group, please get in touch with the castle team in advance and ask about any special requirements you may have.


For events enquiries, learning opportunities and volunteering contact margaret.findlay@edinburgh.gov.uk

For questions about this visual story guide, please contact lauristoncastle@edinburgh.gov.uk

For questions about our access guide, please contact lauristoncastle@edinburgh.gov.uk

Contact Information

 lauristoncastle@edinburgh.gov.uk

 +44 (0) 131 336 2060

 <https://www.edinburghmuseums.org.uk/venue/lauriston-castle>

We hope you enjoyed your visit to Lauriston Castle

Please tell us about your visit



[Lauriston Castle](#) (Facebook)



[@Museums & Galleries Edinburgh](#) (Instagram)



[@EdinCulture](#) (X formerly known as Twitter)



Believe.
Transform.
Achieve.

This Visual Guide has been created in partnership with Museums & Galleries Edinburgh and Edge Group Scotland Ltd's Transitions Programme Team.

For more information about Edge Group Scotland Ltd, please visit <https://www.edgeautism.com>