

City Art Stars

Wax Resist Winter Trees



Beech Tree, Winter, Victoria Crowe, City Art Centre, © Victoria Crowe. Photo credit: Museums & Galleries Edinburgh, City of Edinburgh Council



Winter Landscape (detail), Robert Hardie Condie, City Art Centre, © the copyright holder. Photo credit: Museums & Galleries Edinburgh, City of Edinburgh Council

You will need:

- Images of winter trees and winter landscapes
- White cartridge paper or card
- White crayons or oil pastels (crayon works best)
- Watercolour paints or watered-down classroom paints
- Paintbrushes (medium size) and paint pots



Instructions:

1. First, watch our video: <https://vimeo.com/644391871>
2. Use a white crayon or white oil pastel to draw out a winter scene on a piece of white paper. You could include winter trees, houses, hills and Christmas trees for example.
3. Once your drawing is complete you can add paint. If you have watercolours these work best but you can also use watered-down classroom paints. Use your brush to apply paint on top of your crayon/pastel drawing. You should start to see your winter scene appear on the paper!
4. Leave to dry.

City Art Stars Drawing Edinburgh

Art workshop inspired by Kate Downie



Kate Downie, *Conversations Part I*, 2005. © the artist



Kate Downie, *Three Bridge Evening*, 2005. © the artist

You will need:

- Images of Edinburgh buildings and landmarks
- Black paint, black pastel, charcoal or black pen
- Paint brushes
- Pencil and rubber
- White cartridge paper or card

Instructions:

1. Look at images of Edinburgh landmarks and discuss them
2. Choose a building or landmark to draw
3. Lightly sketch out your building onto white paper using pencil
4. Dip your brush into black paint and go over your pencil lines or draw over your pencil lines with black pastel, charcoal or black pen
5. Try to add as many details as you can



Museums
& Galleries
Edinburgh

City Art
Centre

• EDINBURGH •
THE CITY OF EDINBURGH COUNCIL

City Art Stars Design a toy



Buzz Lightyear Doll, Mattel, 2000, Toy, Museum of Childhood,



Gruffalo Soft Toy, Aurora, 2005, Toy, Museum of Childhood



Sindy Doll, Pedigree Toys, 1968, Toy, Museum of Childhood

You will need:

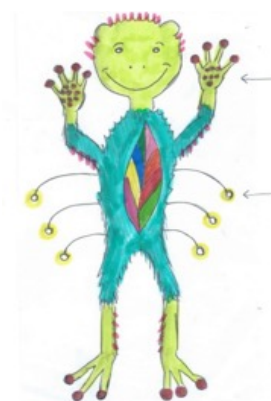
- Images of toys to inspire you
- Pencil and rubber
- Paper
- Coloured pencils or pens

Look

- Look at images of toys from the Museum of Childhood or visit [Capital Collections](#) and search 'museum of childhood'
- Ask questions:
What is a 'designer'?
What does the word 'function' mean?
How were toys in the past different to toys that we have now?

Create

- Use your imagination to design your own unique toy – first think about what age group your toy is designed for, e.g. babies, toddlers or children your age.
- Does your toy have any special gadgets or buttons? What is the function of your toy? What materials is it made from?
- Use a pencil to carefully draw out your toy design first. Then add colour with pens and pencils.
- Give your toy a name and write a few sentences telling us about your toy.



TREE HOPPER TOY
DESIGNER: Tree Hopper is a soft toy - He is a fictional character. He lives in the woods.
FUNCTION: Special grips on his hands and feet allow him to 'stick' to trees and climb easily. Lights attached to his body glow in the dark and allow other tree hoppers to see him in the woods at night.
AGE GROUP: 4-12 years